

SMART Classroom Quick Start Guide

How to log into the computer:

1. Enter your SPSU Network ID* in the box labeled “User Name:”.
2. Select “SPSU” in the box labeled “Log on to:”
3. Click the “OK” button.

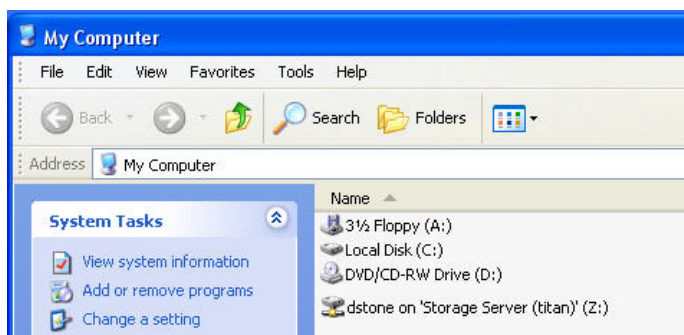
*Your SPSU Network ID is the first part of your SPSU Email Address (everything before “@spsu.edu”, for example: Jane Doe’s network ID would be jdoe.

If you do not have a SPSU Network ID, please check with your academic department, or the department that scheduled the room for you.



Network Storage Server (titan)

When faculty or staff log into a computer on the SPSU Domain (see above), a “Z” drive is automatically added to the computer. The “Z” drive is a storage folder on a server called “titan” that is maintained and backed up by the Information Technology Division. This drive is accessible both on-campus and off-campus via Hornet Connect (<http://connect.spsu.edu>). Faculty are encouraged to temporarily store course materials on this server to reduce the need to carry portable storage media to and from classrooms.



Turning on the Projector and switching devices



Newer classrooms are equipped with Extron control panels that serve as the “remote” control for the classroom projector. These panels are usually located on a wall near the lectern, and are used to turn the projector on and off, adjust the room volume, switch between showing the computer, VCR/DVD, and the document camera.

Please turn off the projector after use. You may need to push the “off” button twice.



Something not working? Need Help?
Call the IT HELPDesk at 678-915-4357

